



"Crystalline" roof by Theo Hotz zigzags over Vienna Central Station



Dan Howarth | 13 February 2017

[1 comment](#)

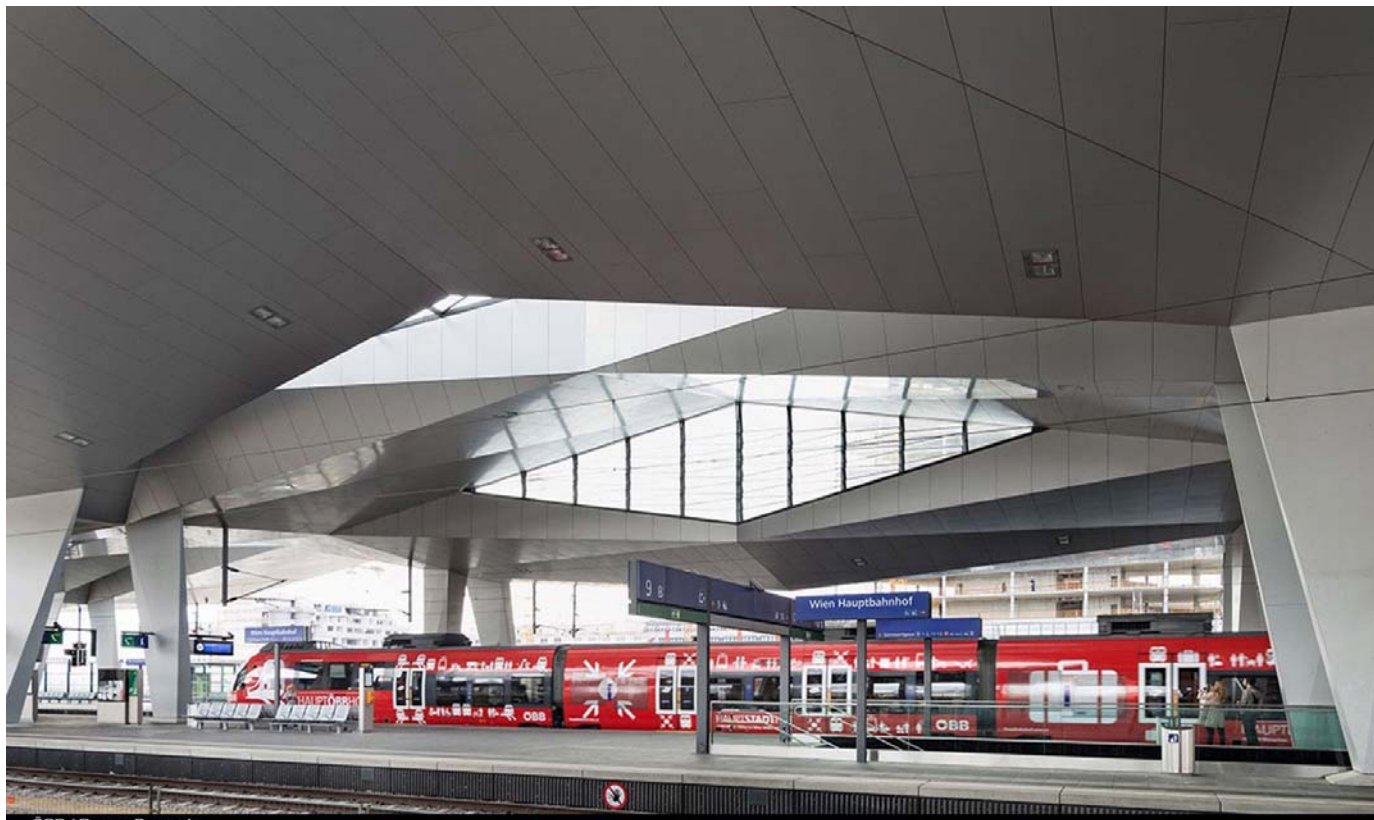
A+Awards: Swiss firm Theo Hotz Partner Architekten has created an undulating cover for platforms at Vienna's Central Station, which received an [Architizer A+Award](#) last year.

The new sculptural roof was added during an overhaul of the station, located south of the city centre in an area undergoing extensive regeneration.



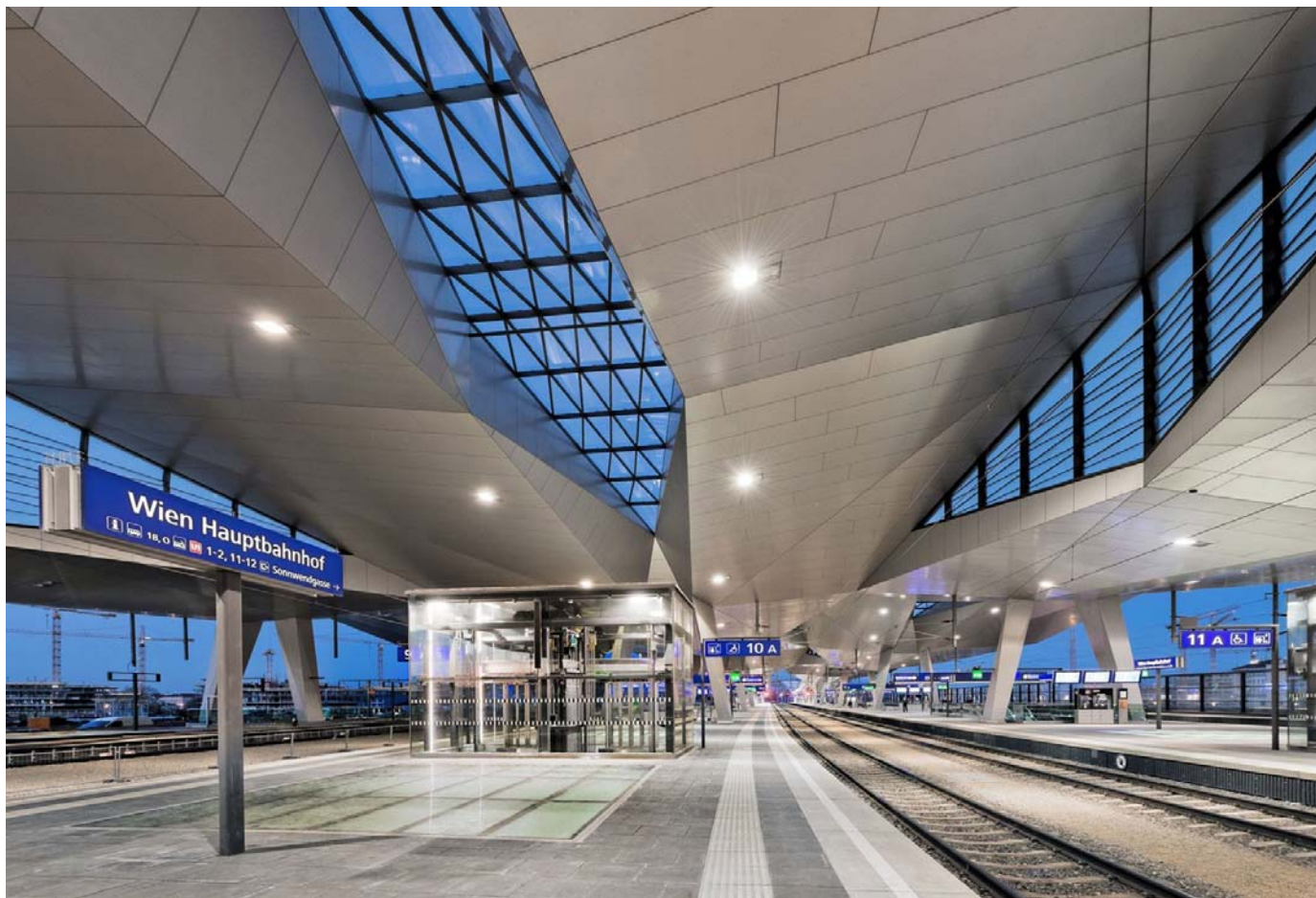


"Vienna's new central station project is pivotal to the city's transport policy as it enables trains to converge in a single location for the first time," the team said.



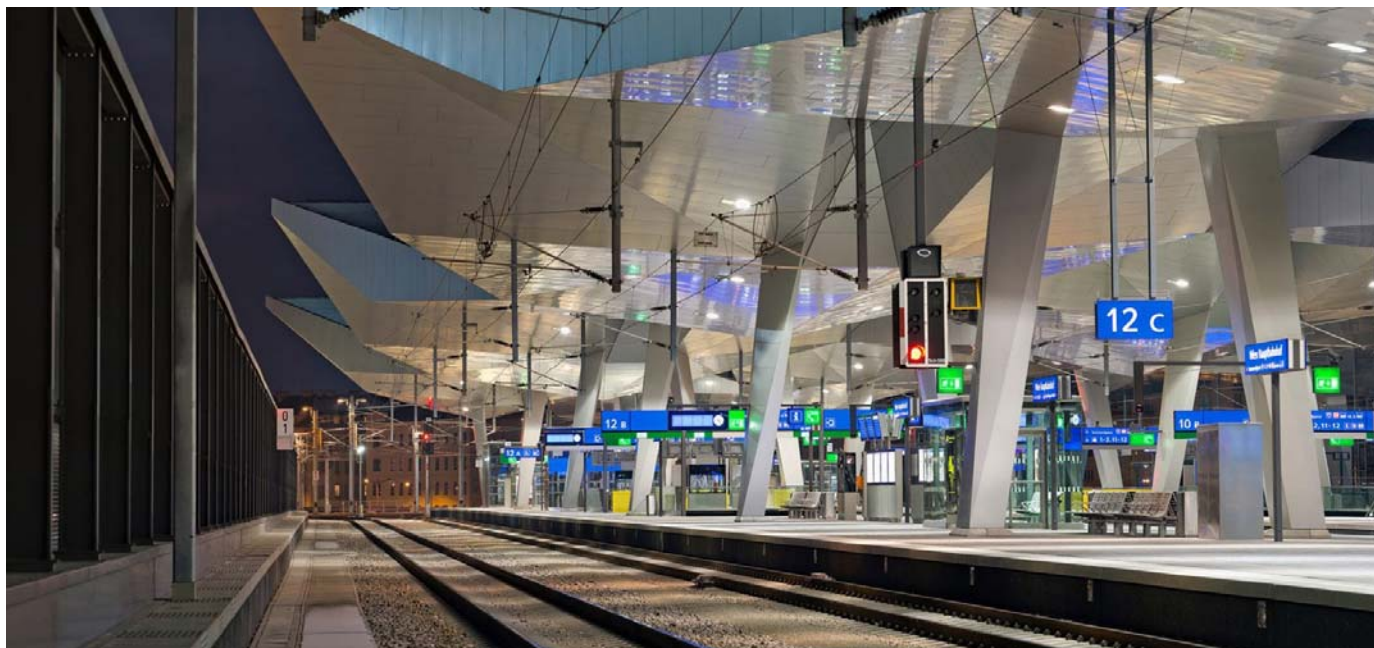
The canopy comprises 14 diamond-shaped space frames, arranged in five rows that follow the lines of the tracks and each of the platforms.

Punctured in the centre by a skylight, the segments are staggered to produce a zigzagging effect over the station, and allow in light through glazing in the gaps in between.



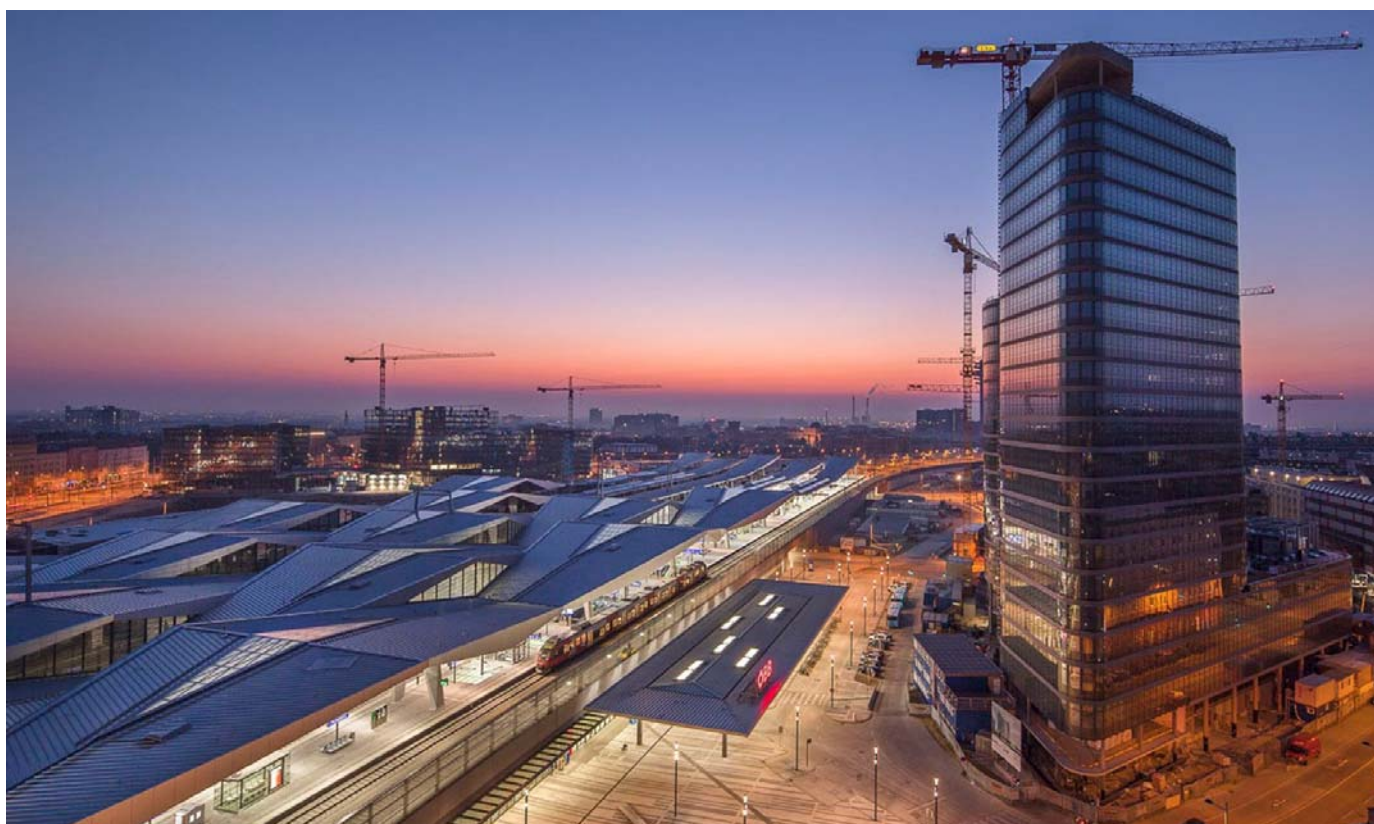
The faceted surfaces are clad in glossy, pale-toned panels, evoking the appearance of giant crystal structures.

"The angled lines of the soffits reflect those of the folded plate structure above and their triangular surfaces create a striking crystalline form that produces stunning light effects," said the team.



Vienna Central Station won in the Bus and Train Stations category at the 2016 A+Awards.

Organised by Architizer, the awards promote and celebrate the year's best projects and products.



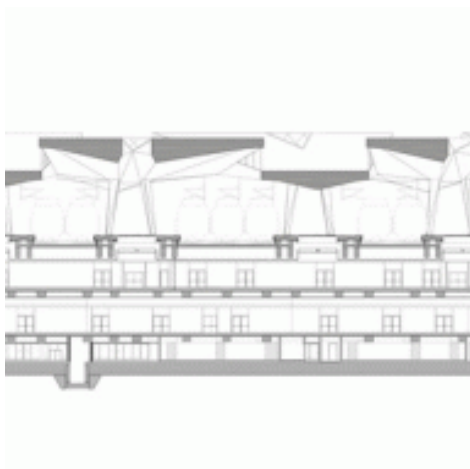
Their stated mission is to nurture the appreciation of meaningful architecture in the world and champion its potential for a positive impact on everyday life. [Find out more about the A+Awards](#) ›

dezeen



Read more [Architecture](#) | [Architizer](#) | [Architizer A+ Awards](#) | [Austria](#) | [Infrastructure](#) | [Railway stations](#) | [Vienna](#)

More images and plans



Share and comment



1 comment

More
Architecture
Interiors
Design
Technology